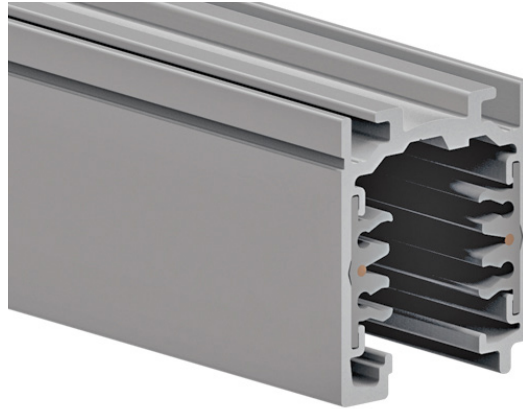


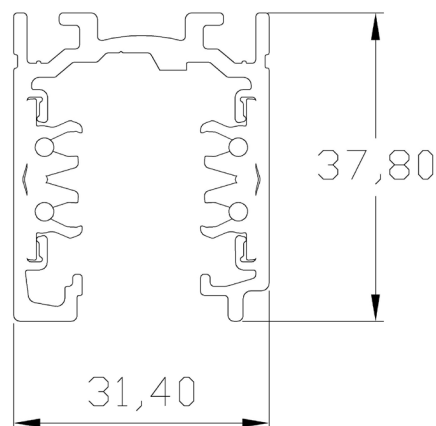
Mains Voltage Track



Universal mains voltage 3 circuit track is based on a platform designed for either simple on/off installation or as a controlled track with either Dali and Analogue protocols.

This new platform has been designed for use in lighting projects and schemes employing controllable or fixed output systems. Allowing the future upgrading of controllable lighting fixtures at any time.

Track available to be surface mounted or suspended mounted or for seamless trimless installations.



MVT-9000-ST

Project Ref: _____

Location Ref: _____

Track Order Code: - -

Profile
MVT-9000-ST Mains Voltage Track

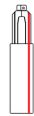
Length
1 1 meter
2 2 meters
3 3 meters

Body Finish
WH White
BK Black

End Feed

Fixture Order Code: -

Direction
9001 Polarised Right



Direction
9002 Polarised Left



Finish
WH White
BK Black



Joining Connector

Fixture Order Code: - -

Finish
WH White
BK Black

Type
(Blank)
M Electrical coupler
 Mechanical only coupler



Project Ref: _____

Location Ref: _____

End Cap

Fixture Order Code: -

Finish
WH
BK White
 Black



Centre Feed

Fixture Order Code: -

Finish
WH
BK White
 Black



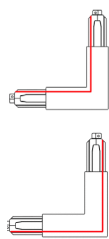
Corner Connector

Fixture Order Code: -

Direction
9011 Polarised Inner

9012 Polarised Outer

Finish
WH
BK White
 Black



Project Ref: _____

Location Ref: _____

T Connector

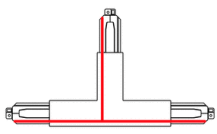
Fixture Order Code: -

Direction
9013
9014
9015
9016

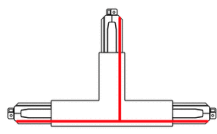
Outside Left
Outside Right
Inside Left
Inside Right

Finish
WH
BK

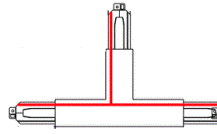
White
Black



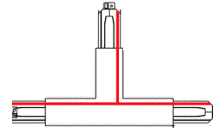
9013



9014



9015



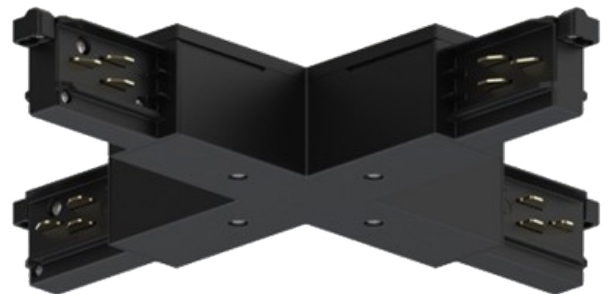
9016

X Connector

Fixture Order Code: 9017 -

Finish
WH
BK

White
Black

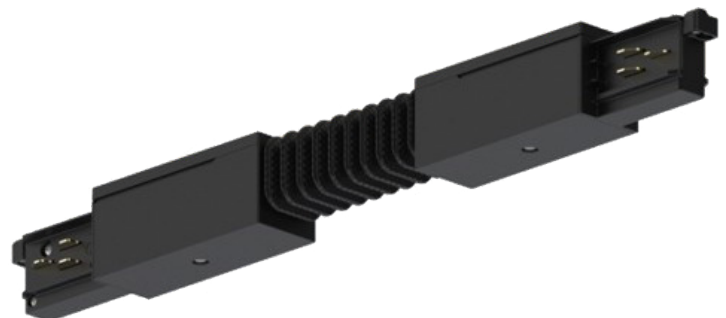


Flexible Connector

Fixture Order Code: 9018 -

Finish
WH
BK

White
Black



Project Ref: _____

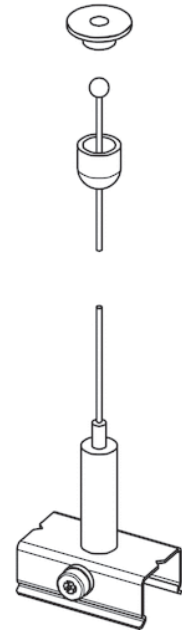
Location Ref: _____

Single Suspension Kit

Fixture Order Code: - -

Cable Length

- 1.5 1.5 meters
- 3 3 meters
- 5 5 meters

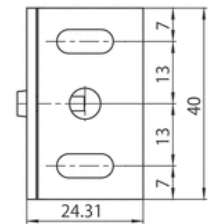
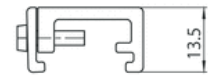


Ceiling Bracket

Fixture Order Code: -

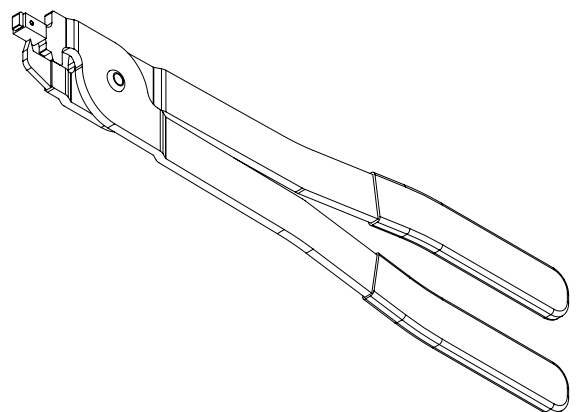
Finish

- WH White
- BK Black



Cutting Tool For Track Conductors

Order Code:



Technical Details

Dimming. Whilst Lucent can offer the majority of its luminaires with various dimming options, it remains the responsibility of the specifier/installer to check and ensure compatibility of any control equipment used. Additional cabling may be required depending on the dimming protocol specified.

The exact dimming protocol must be confirmed to allow the selection of suitable drivers or bluetooth devices.

^ Depth indicated is the minimum recess depth for the luminaire with a remote mounted LED driver. Installing a driver through either the luminaire cut-out or installation kit may require additional recess depth, please refer to the relevant luminaire installation instructions for further details. Data correct at time of publishing

First Fix Requirement. Luminaire comprised of fixture body with ceiling trim and installation kit, which is to be fitted into the ceiling once finished. Ensure correct alignment of the installation kit before final assembly (see luminaire installation instructions for details)

IP Rating. Tested from underside of the ceiling

It is the policy of Lucent Lighting to continually review and improve its products and therefore reserve the right to change any details of product or withdraw specifications without prior notice.

Luminaires designed to comply with EN60598 and all other relevant standards.

This specification sheet supersedes all previous versions.

All intellectual property rights pertaining to the product described above and to this document are owned by or licensed to Lucent Lighting Ltd.

We reserve the right to take whatever action is necessary to protect those intellectual property rights.

Please notify Lucent Lighting Ltd of any inaccuracies immediately. E&OE