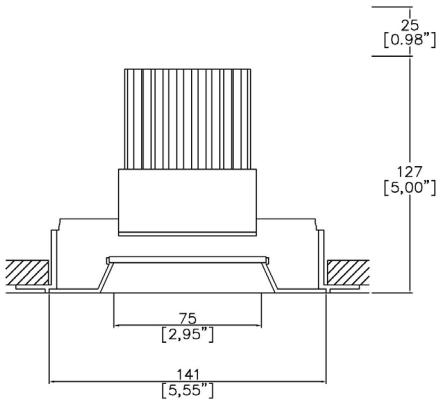


ProSpex Plus XL Bevel Fixed Trimless



141mm (5.55") overall trimless diameter. Available with standard trim kit or plaster-in kit for flush appearance. Family of matching products also available. Required depth height + 25mm^



090+XL-13-LED-TL
Cut-out 142mm Ø

LED Source	LED71/U	LED71/U	LED71/U
CCT	3000K	3000K	3000K
Drive Current	700mA	700mA	700mA
Power inc Driver	27W	27W	27W
Beam Angle	12°	19°	34°
Delivered Lumens	1550	1328	1404
Delivered Intensisty cd	22499	10048	4164
Efficacy lm/w	57	49	52
Forward Volt	33V	33V	33V
CRI	≥98 CRI	≥98 CRI	≥98 CRI

Project Ref: _____

Location Ref: _____

Fixture Order Code: 090+XL-13-LED-TL - - -

Fixture

090+XL-13-LED-TL

Plus XL Bevel Fixed Trimless with LED71

Finish

WH
BK
RAL

White
Black
Custom RAL Colour*

IP Rating

44

IP44

Emergency

E
ED
ES

Maintained 3hr Emergency
Maintained 3hr DALI Self Test
Maintained 3hr Self Test



LED Order Code: LED71/U - - -

LED

LED71/U

LED70 ONE ULTRA

CCT

927
930

90 CRI 2700K
90 CRI 3000K

Beam

12
19
34

12°
19°
34°

Protocol

S
A
P
D
B

Non-Dim
Analogue (0-10v)
Phase
DALI
Bluetooth**



Honeycomb Louvre



Diffusing Lens



Frosted Lens



Heavy Spread Lens



Linear Spread Lens



Warm Tone

Accessories Order Code:

Louvre/Lens

- | | |
|------|--------------------|
| MN71 | Honeycomb Louvre |
| MDCC | Warm Tone Lens |
| MDUV | UV Lens |
| MDDF | Diffusing Lens |
| MDFR | Frosted Lens |
| MDLS | Linear Spread Lens |
| MDHS | Heavy Spread Lens |

Technical Details

*Custom RAL code must be specified. Custom RAL colours can increase prices and lead times

Dimming. Whilst Lucent can offer the majority of its luminaires with various dimming options, it remains the responsibility of the specifier/installer to check and ensure compatibility of any control equipment used. Additional cabling may be required depending on the dimming protocol specified.

**Bluetooth (wireless) is the communication method. The exact dimming protocol must be confirmed to allow the selection of suitable drivers or bluetooth devices.

^ Depth indicated is the minimum recess depth for the luminaire with a remote mounted LED driver. Installing a driver through either the luminaire cut-out or installation kit may require additional recess depth, please refer to the relevant luminaire installation instructions for further details.Data correct at time of publishing

First Fix Requirement. Luminaire comprised of fixture body with ceiling trim and installation kit, which is to be fitted into the ceiling once finished. Ensure correct alignment of the installation kit before final assembly (see luminaire installation instructions for details)

IP Rating. Tested from underside of the ceiling

It is the policy of Lucent Lighting to continually review and improve its products and therefore reserve the right to change any details of product or withdraw specifications without prior notice.

Luminaires designed to comply with EN60598 and all other standards.

This specification sheet superseded all previous versions.

All intellectual property rights pertaining to the product described above and to this document are owned by or licensed to Lucent Lighting Ltd.

We reserve the right to take whatever action is necessary to protect those intellectual property rights.

Please notify Lucent Lighting Ltd of any inaccuracies immediately. E&OE

Light efficiency:

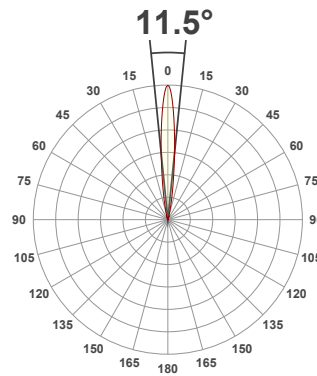
57 Lumen/Watt

Light quality:

CRI: 97.9

Color temperature:

3000 K



Product name:

090+XL-13-LED - LED71_U-30-12-700mA

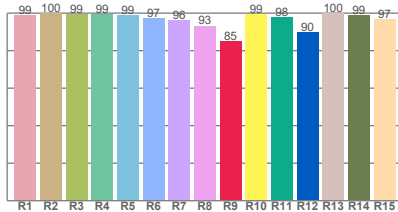
Item number:

PlusXL Bevel Fixed - LED71/U-30-12-700mA

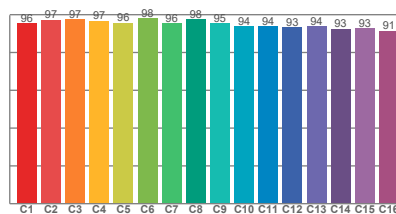
Delivered information for above fixture and LED combination.

Output: 1550 Lumen Peak intensity: 22499 cd Power consumption: 27.0

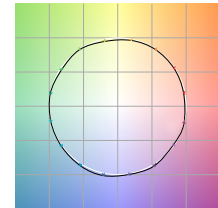
CRI R values



TM30 C Values

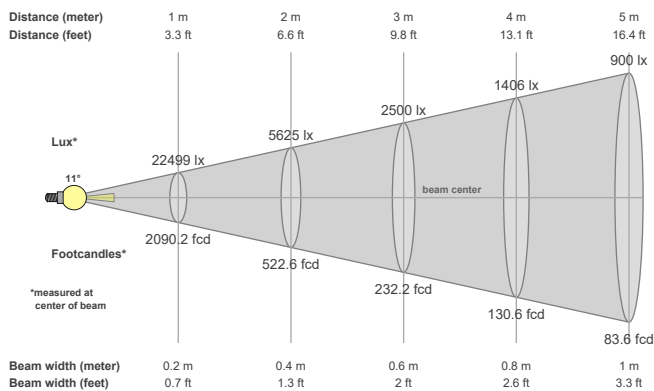


Color vector graphics



Color temperature	Color rendering index	Red component	Color fidelity	Color gamut	Color quality scale	Color coordinate cie 1931	Color coordinate cie 1931	Color coordinate	Color coordinate	Color diviation from black body
CCT	CRI	CRI R9	TM30 Rf	TM30 Rg	CQS	x	y	u	v	Δuv
3000 K	97.9	85.2	95.2	99.6	95.8	0.437	0.404	0.250	0.347	-0.0003

Beam details



Beam angels

Beam angle 50%	Field angle 10%	Cutoff angle 2,5%
11.5°	24°	35.4°

Beam intensities

Peak intensity	Int. ratio in 120° cone	Int. ratio in 90° cone
22499 cd	99.3%	96.9%

Beam intensities from 1-20m

1m	2m	3m	4m	5m	6m	7m	8m	9m	10m	11m	12m	13m	14m	15m	16m	17m	18m	19m	20m
3.3ft	6.6ft	9.8ft	13.1ft	16.4ft	19.7ft	23ft	26.2ft	29.5ft	32.8ft	36.1ft	39.4ft	42.7ft	45.9ft	49.2ft	52.5ft	55.8ft	59.1ft	62.3ft	65.6ft
22499lx	5625lx	2500lx	1406lx	900lx	625lx	459lx	352lx	278lx	225lx	186lx	156lx	133lx	115lx	100lx	88lx	78lx	69lx	62lx	56lx
2090.2fcd	522.6fcd	232.2fcd	130.6fcd	83.6fcd	58.1fcd	42.7fcd	32.7fcd	25.8fcd	20.9fcd	17.3fcd	14.5fcd	12.4fcd	10.7fcd	9.3fcd	8.2fcd	7.2fcd	6.5fcd	5.8fcd	5.2fcd

The above information is for 3000K colour temperature, for specific module information please see LED spec located on our website

For information regarding other colour temperatures please use the following factors for lumen output and candelas:

2700K = 1

Light efficiency:

49 Lumen/Watt

Light quality:

CRI: 97.5

Color temperature:

3000 K



Product name:

090-XL-13-LED -
LED71_U-30-19-700mA

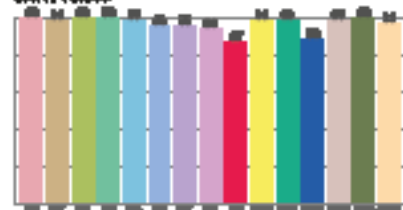
Item number:

PlusXL Bevel Fixed - LED71/
U-30-19-700mA

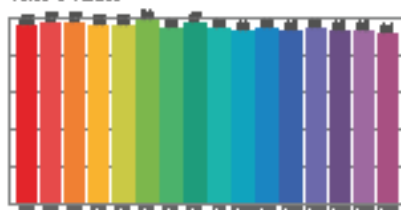
Delivered information for above
fixture and LED combination.

Output: 1328 Lumen Peak intensity: 10048 cd Power consumption: 27.0

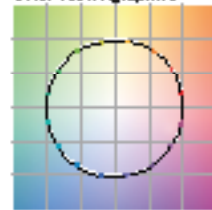
CRI R values



TM30 C Values

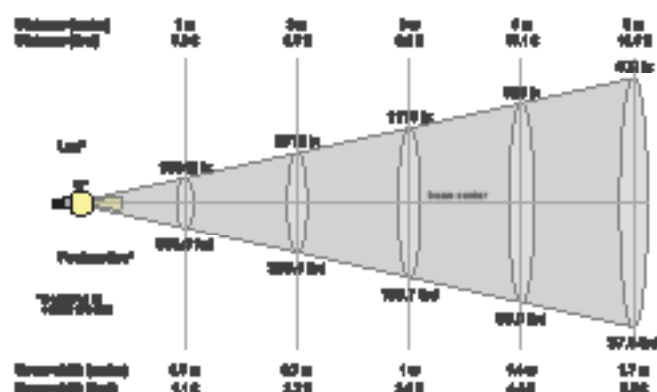


Color vector graphics



Color-render	Color-render	Color-render	Color-render	Color-render	Color-render	Color-render	Color-render	Color-render	Color-render	Color-render
OCT	CRI	CRI R9	TM30 R1	TM30 R9	CRI	x	y	u	v	Sum
3000 K	97.5	97.4	94.8	99.5	96.8	0.437	0.404	0.268	0.348	0.0012

Beam details



Beam angle

Beam angle 50%	Field angle 50%	Cutoff angle 2.0%
19.2°	22.7°	4.3°

Beam intensities

Peak intensity	Int. ratio to 120° beam	Int. ratio to 60° beam
10048 cd	88.4%	87.2%

Beam intensities from 1-20m

1m	2m	3m	4m	5m	6m	7m	8m	9m	10m	11m	12m	13m	14m	15m	16m	17m	18m	19m	20m
3.3ft	6.6ft	9.8ft	13.1ft	16.4ft	19.7ft	23ft	26.2ft	29.5ft	32.8ft	36.1ft	39.4ft	42.7ft	45.9ft	49.2ft	52.5ft	55.8ft	59.1ft	62.3ft	65.6ft
10048lx	2512lx	1116lx	628lx	402lx	279lx	205lx	157lx	124lx	100lx	83lx	70lx	59lx	51lx	45lx	39lx	35lx	31lx	28lx	25lx
933.5fc d	233.4fc d	103.7fc d	58.3fc d	37.3fc d	25.9fc d	19.1fc d	14.6fc d	11.5fc d	9.3fc d	7.7fc d	6.5fc d	5.5fc d	4.8fc d	4.1fc d	3.6fc d	3.2fc d	2.9fc d	2.6fc d	2.3fc d

The above information is for 3000K colour temperature, for specific module information please see LED spec located on our website

For information regarding other colour temperatures please use the following factors for lumen output and candelas:

2700K = 1

Light efficiency:

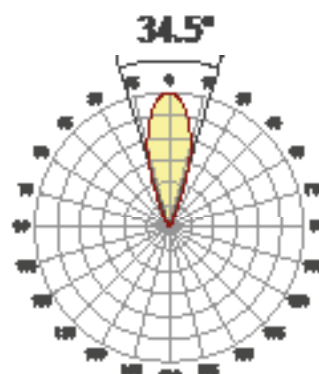
52 Lumen/Watt

Light quality:

CRI: 97.9

Color temperature:

3000 K



Product name:

090-XL-13-LED -
LED71_U-30-34-700mA

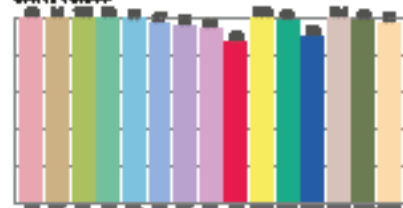
Item number:

PlusXL Bevel Fixed - LED71/
U-30-34-700mA

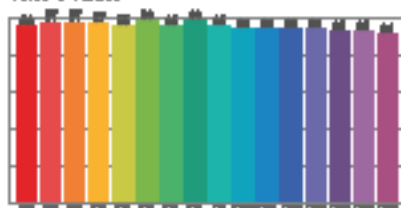
Delivered information for above
fixture and LED combination.

Output: 1404 Lumen Peak intensity: 4164 cd Power consumption: 27.0

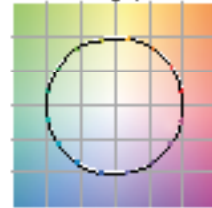
CRI R values



TM30 C Values

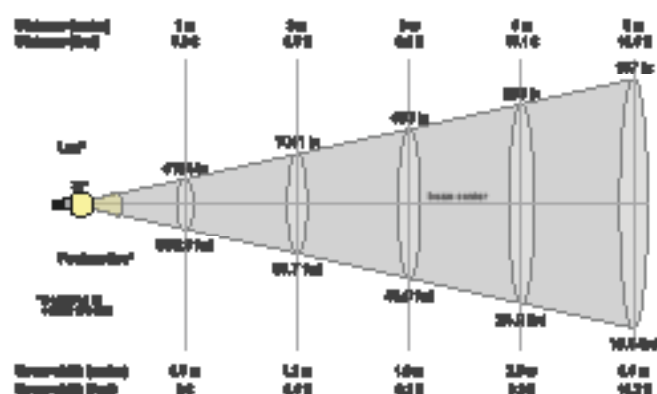


Color vector graphics



Colorimetric	Colorimetric	Colorimetric	Colorimetric	Colorimetric	Colorimetric	Colorimetric	Colorimetric	Colorimetric	Colorimetric	Colorimetric
CCT	CFS	CFS RD	TM30 R7	TM30 R9	CRI	X	Y	U	V	Z
3000 K	57.9	58.4	96.1	99.8	96.9	0.437	0.404	0.262	0.348	0.0000

Beam details



Beam angles

Beam angle 50%	Field angle 50%	Cut-off angle 2.0%
34.5°	58.2°	72.8°

Beam intensities

Peak intensity	Int. ratio to 120° beam	Int. ratio to 60° beam
4164 cd	88.6%	87.3%

Beam intensities from 1-20m

1m	2m	3m	4m	5m	6m	7m	8m	9m	10m	11m	12m	13m	14m	15m	16m	17m	18m	19m	20m
3.3ft	6.6ft	9.8ft	13.1ft	16.4ft	19.7ft	23ft	26.2ft	29.5ft	32.8ft	36.1ft	39.4ft	42.7ft	45.9ft	49.2ft	52.5ft	55.8ft	59.1ft	62.3ft	65.6ft
4164lx	1041lx	463lx	260lx	167lx	116lx	85lx	65lx	51lx	42lx	34lx	29lx	25lx	21lx	19lx	16lx	14lx	13lx	12lx	10lx
386.9fc d	96.7fc d	43fc d	24.2fc d	15.5fc d	10.7fc d	7.9fc d	6fc d	4.8fc d	3.9fc d	3.2fc d	2.7fc d	2.3fc d	2fc d	1.7fc d	1.5fc d	1.3fc d	1.2fc d	1.1fc d	1fc d

The above information is for 3000K colour temperature, for specific module information please see LED spec located on our website

For information regarding other colour temperatures please use the following factors for lumen output and candelas:

2700K = 1