

Installation Instructions ProSpex Focus 70 and 90

Instructions applicable for the following luminaires:

ProSpex Focus 70:

FIXED - 070-LED/11

ADJ - 073-LED/11

ProSpex Focus 90:

FIXED - 090-LED/XIC/16/GU

ADJ - 093-LED/XIC/16/GU

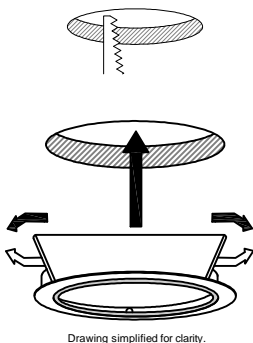
ProSpex Focus 90IP54

FIXED - 090-LED/XIC/16/GU-54

ADJ - 093-LED/XIC/16/GU-54

Cut hole as follows:

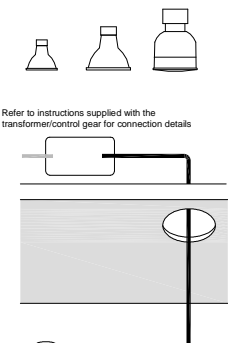
Focus 70	60mmØ
Focus 90	73mmØ



To install the outer bezel into the ceiling, press spring blades toward the luminaire body and carefully insert into the ceiling cut-out. Push the luminaire up until trim is flat against the finished ceiling.

The bezel is now installed.

MR11, MR16 - GU versions:



Install control gear/transformer where applicable through the ceiling cut-out.

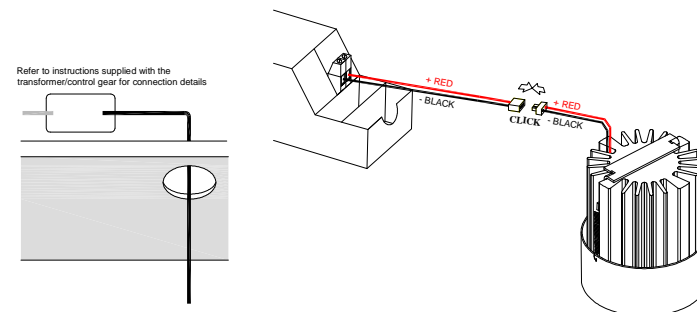
Wire equipment according to the installation instructions provided/printed on the equipment to the terminal block mounted on fixtures bracket.

(For GU10 versions please take mains supply directly to the plug/socket provided).



Insert any lenses/louvers into the lamp/Accessory holder. Then install the lamp. Lamp retaining springs will hold everything in place.

LED - XIC versions:

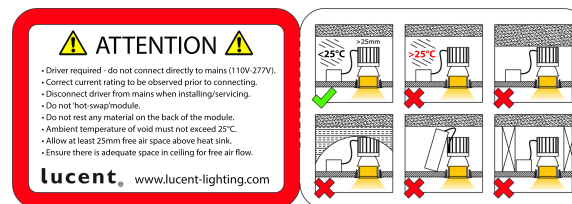
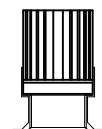


Install LED Drivers through the ceiling cut-out.*

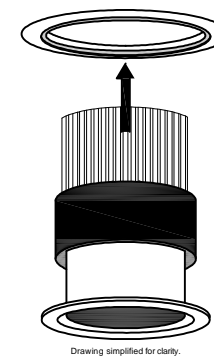
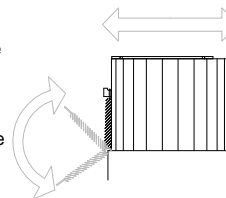
Wire Primary and, if required, the dimming control input of the equipment according to the installation instructions provided/printed on the driver. Ensuring the driver is not energised, connect the LED lead to the flying lead from the driver.

Observe the LED warning label attached to the modules cable. remove label prior to installation (removal of the label implies understanding and acknowledgement of the conditions for installation).

* Some LED drivers will not fit through the luminaire cut-out, and will require remote mounting. Please consult Lucent Lighting if required.



LED modules will normally be factory fitted in the luminaire. However if the module needs to be removed from the fixture slide the LED brace to one side exposing the hook end of the spring. Detach the spring, remove the brace and remove the LED module from the luminaire. Reverse for re-assembly

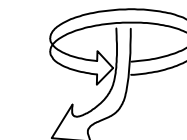


The luminaire body can then be installed into the Bezel. The assembly is held in position by magnets.

Re-lamping is the reverse of the above.



Installation is complete.



Adjustable versions can be aimed. Luminaire body can be rotated with the ceiling trim & central tube tilted to suit.