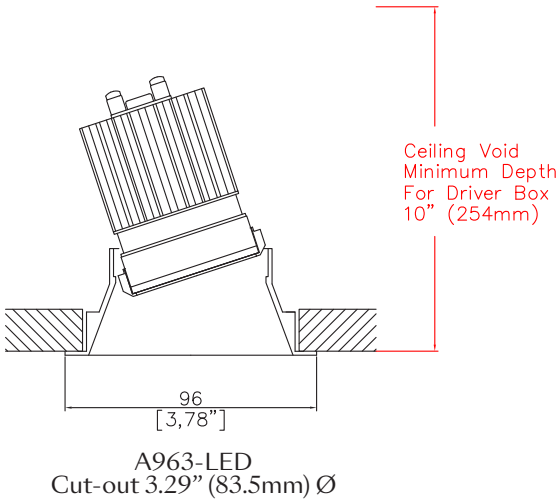




EasyFit Trim Round Accent



3.78" (96mm) overall diameter. Range of soft appearance with minimal trim for achieving trimless effect. Fixed and wallwash version available. Supplied with a remote driver box and a plug and play tethered power supply.



LED Source	ALED51/Q-HE	ALED51/Q-HE	ALED51/Q-HE	ALED51/Q-HE
CCT	3000K	3000K	3000K	3000K
Drive Current	200mA	200mA	200mA	200mA
Power inc Driver	8.0W	8.0W	8.0W	8.0W
Beam Angle	NF (16°)	MF (24°)	FL (33°)	WFL (54°)
Delivered Lumens	1082	1106	1104	1082
Delivered Intensisty cd	7979	5365	3264	1427
Delivered Lumens per circuit watt	135	138	138	135
Forward Volt	33V	33V	33V	33V
CRI	≥90 CRI	≥90 CRI	≥90 CRI	≥90 CRI

Apply these factors to 3000K for lumen output of other CCTs: 2700K x 0.98 / 3500K x 1.01 / 4000K x 1.02.

Ceiling void minimum depth for driver box: 10.00" (254mm)

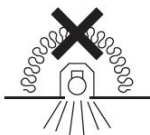
Project Ref: _____ Location Ref: _____

Specify fixture part number (All boxes must be filled in to correctly order)

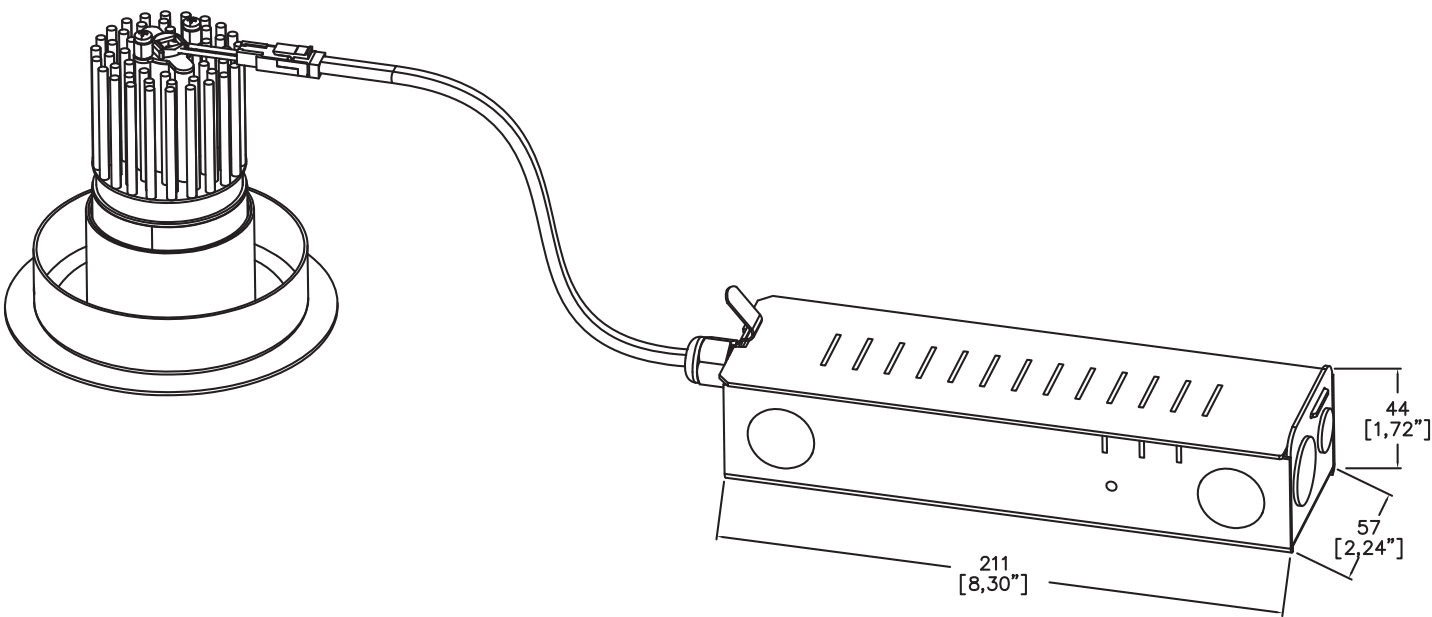
A963-LED			ALED51/Q-HE			ALEZ1-120-277		
Finish								
WH	White							
BK	Black							
RAL	Custom*							
ABRI	Antique Brass							
ABZI	Antique Bronze							
PCHI	Polished Chrome							
PNKI	Polished Nickel							
PBRI	Polished Brass							
Supplied for dry location as standard								
LED Type								
ALED51/Q-HE	LED50 ONE Quantum High Efficiency							
CCT								
27	2700K							
30	3000K							
35	3500K (1)							
40	4000K (1)							
(1) contact Lucent for availability								
Beam Angles								
NF	Narrow Flood							
MF	Medium Flood							
FL	Flood							
WFL	Wide Flood							
EasyFit								
ALEZ1-120-277	Lucent EasyFit 120-277V							
Dimming Protocol								
SLA	EldoLED Analog (0-10V) (0.1% Dimming)							
ECA	EldoLED Analog (0-10V) (1% Dimming)							
SLD	EldoLED DALI (0.1% Dimming)							
ECD	EldoLED DALI (1% Dimming)							
PTB15	ERP PTB 0-10V/Phase (1% Dimming) (PHASE ONLY 120V)							
FTX15	Hatch Foundation 0-10V/Phase (1% Dimming)							
Contact Lucent factory for Lutron LED Driver options								
Louvre/Lens								
XX	Not required							
LL45	Honeycomb							
LLDF	Solite/Diffusing							
LLFR	Frosted Lens							
LLLS	Linear Spread							
LLHS	Heavy Spread							
Trim accepts a maximum of 1 accessory								

NIC - No contact with insulation

Ceiling void minimum depth for driver box: 10.00" (254mm)



Fixture and EasyFit driver box



Ceiling void minimum depth for driver box: 10.00" (254mm)

Finish selection



Antique Brass



Antique Bronze



Polished Brass



Polished Nickel



Polished Chrome

Accessories



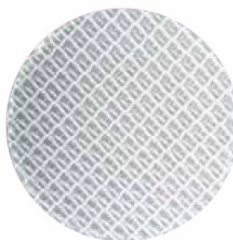
Honeycomb Louvre



Diffusing Lens



Frosted Lens



Heavy Spread Lens



Linear Spread Lens

Technical Details

*Custom RAL code must be specified. Custom RAL colours can increase prices and lead times

Dimming. Whilst Lucent can offer the majority of its luminaires with various dimming options, it remains the responsibility of the specifier/installer to check and ensure compatibility of any control equipment used. Additional cabling may be required depending on the dimming protocol specified.

^ Depth indicated is the minimum recess depth for the driver to be installed through the luminaire cut out.

First Fix Requirement. Luminaire comprised of fixture body with ceiling trim and installation kit, which is to be fitted into the ceiling once finished. Ensure correct alignment of the installation kit before final assembly (see luminaire installation instructions for details)

Location. Tested from underside of the ceiling

It is the policy of Lucent Lighting to continually review and improve its products and therefore reserve the right to change any details of product or withdraw specifications without prior notice.

This specification sheet supersedes all previous versions.

All intellectual property rights pertaining to the product described above and to this document are owned by or licensed to Lucent Lighting Ltd.

We reserve the right to take whatever action is necessary to protect those intellectual property rights.

Please notify Lucent Lighting Ltd of any inaccuracies immediately. E&OE

