

# lucent<sup>®</sup>



New for Light24

**lucent** /'lu:s(ə)nt/

adjective literary

glowing with or giving off light.

'the moon was lucent in the background'

Raffles London at the OWO.

Lighting design: dpa lighting consultant

Architect: EPR Architects

Photography: Courtesy of Raffles.

# Contents:

Page 1 | **New finish selection**

Page 3 | **New 2200K/2400K CCTs**

Page 5 | **New LED35/Q and LED51/Q**

Page 7 | **LumiCone Pendant**

Page 9 | **IG60 SpotLight**

Page 10 | **Oculus range**

Page 14 | **Mix Flare range**

Page 16 | **Mix Duo range**

Page 18 | **Mix Edge range**

Page 21 | **Mix85 Pinhole**

# NEW Finish selection

Expanding our colour selection with five new finishes. In addition to classic black, white, and any RAL colour, you can now choose from two elegant antique finishes and three sleek polished options. These new finishes bring even more customization to our products, allowing you to achieve the perfect look for any space.



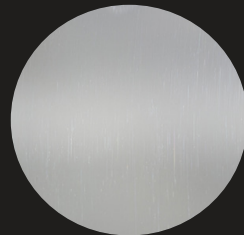
Antique Brass



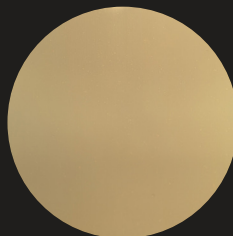
Antique Bronze



Polished Nickel



Polished Chrome



Polished Brass



Six by Nico, Cardiff.  
Interior Design: Studio Two Interiors  
Photography: Stevie Campbell

# Revealing the warmth of 2200K and 2400K lighting

*...because the best lighting doesn't just  
brighten, it warms*

Discover the latest additions to our range of modules, with two new warm colour temperature options at 2200K and 2400K. Designed to create inviting atmospheres, they are available in both LED51 and LED35 sizes to seamlessly fit into all compatible fixtures.







# Discover our new Quantum modules

Introducing our cutting-edge Quantum modules, available in two sizes: LED51 and LED35. These modules offer two performance options: High Efficacy (HE) and High Output (HO). Engineered for efficiency and performance making it the perfect choice for achieving PartL standards.

The Quantum modules are offered in three standard colour temperatures 2700K, 3000K, and 4000K to ensure ideal lighting for any space.





# Available in two sizes



## LED51/Q

The LED51 model comes in two configurations:

**HE (High Efficacy)** source lumens up to 1187lm at 200mA, with an impressive efficacy of 180 lm/W.\*

**HO (High Output)** source lumens up to 1899lm at 350mA, with an impressive efficacy of 160 lm/W.\*

Available in three standard colour temperatures: 2700K, 3000K, and 4000K.



## LED35/Q

The LED35 model comes in two configurations:

**HE (High Efficacy)** source lumens up to 864lm at 200mA, with an impressive efficacy of 108 lm/W.\*

**HO (High Output)** source lumens up to 1054lm at 250mA, with an impressive efficacy of 109 lm/W.\*

Available in three standard colour temperatures: 2700K, 3000K, and 4000K.

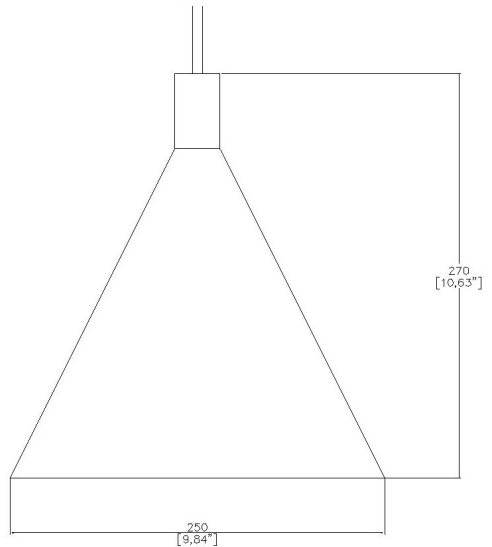
\*Source lumens delivered

# LumiCone pendant

Demonstrating Lucent's capability to produce custom designed luminaires.

Ø250mm Pendant mounted conical luminaire in a Heavy Duty, Textured Finish in a range of beam angles. Can be mounted directly to the ceiling or track mounted on our 48v low voltage track or FineLine system. Ideally suited for Reception or Bar areas within the Hospitality sector.

**LumiCone Pendant**  
060-PM-LC  
13.6w/1049 lm





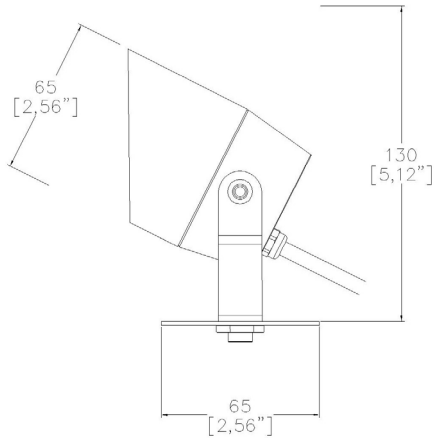
Temper Bar & Restaurant, Shoreditch.  
Lighting designer: Pritchard Themis  
Custom Lumicone pendants: Lucent

# IG60 Spotlight

Ø65mm IP65 fully adjustable and rotatable surface mounted exterior grade spotlight in Anodised Black finish.

With a 60° angled anti-glare cowl as standard.

Available in 4 beam angles: NF (16°), MF (21°), FL (29°), WFL (42°).



**IG60 SpotLight**  
IG60-SP  
4.2w/ 352 lm





Private residence, Spain

# Discover our new Oculus Range:

Available in two sizes: Oculus45 and  
Oculus

Following on from our successful Micro40 Oculus we have added two new models to the Oculus range: **Oculus45 and Oculus.**

Both models are available with trim and trimless installation kits, ideal for various ceiling conditions including existing ceilings, new partial skims, as well as wood and stone surfaces. **1809lm delivered** using the new Quantum HO module.\*

Built specifically to work with our new LED50 ONE and LED 35 modules, which offer quick and easy screw-in toolless installation, adjustable to 30° and when fully adjusted do not break the ceiling line.

Constructed from recycled materials for circularity.

Rated IP54 as standard and optionally IP65, the Oculus Range is fire rated ready with 1 hour fire rating available. Designed and produced in the UK.



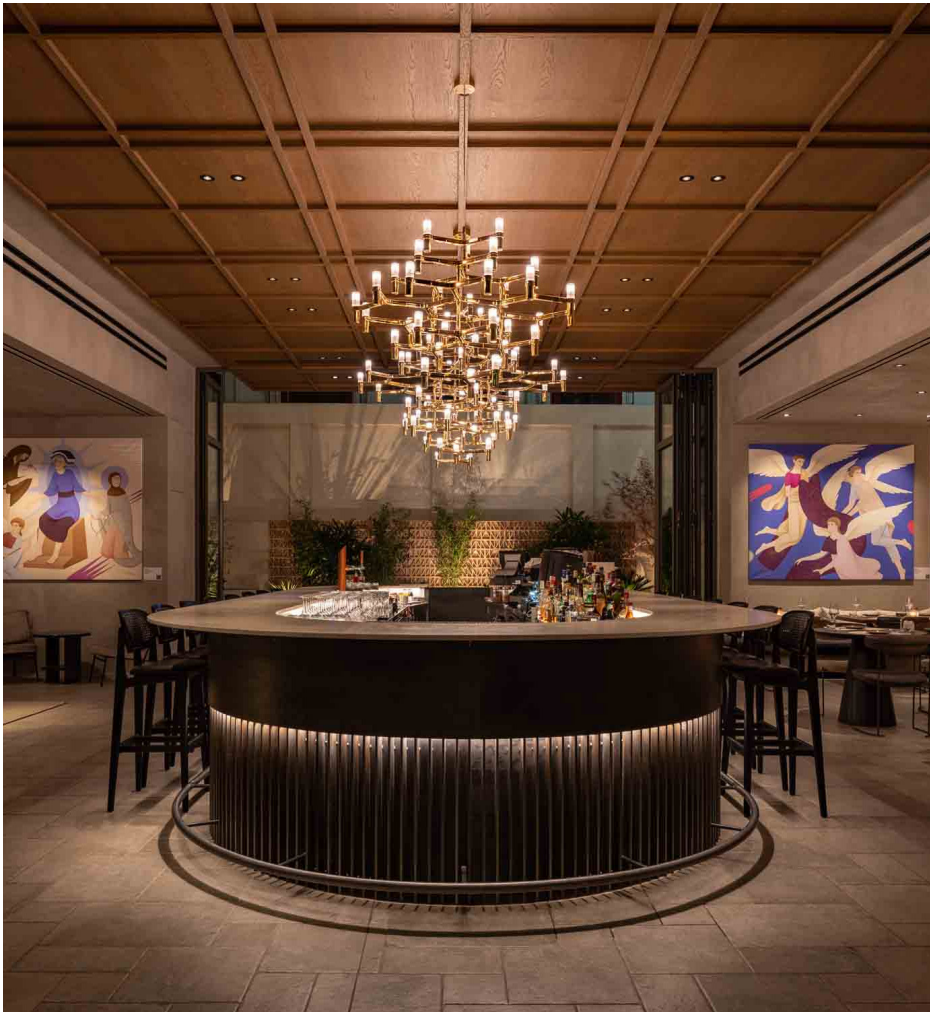
## Winner of Build Back Better Awards 2024:

The Oculus downlight from Lucent Lighting has won both a **GOLD** and **GREEN** Build Back Better Award in the 2024 lighting category for its sustainability credentials.

The recessed eyeball luminaire achieves a TM66 rating of 2.5 for 'excellent circularity' and is designed and assembled in the UK using 89% recycled materials.

\*This percentage reflects the highest efficiency measured for this particular fixture





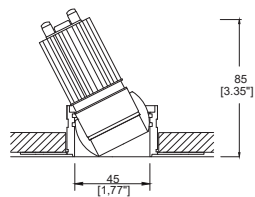
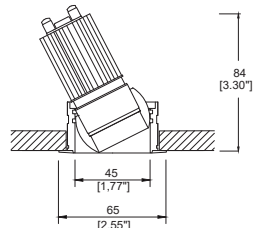
Monasty, Thessaloniki - Autograph Collection by Marriott  
Lighting Design: E.Deko & Associates  
Photography: Gavriil Papadiotos

# Oculus 45

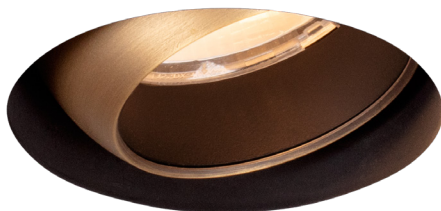


**Oculus45 Trim**  
OC45010-TRI  
**Oculus45 Trimless**  
OC45010-TLI

LED35/Q-HE  
8,0w/ 762lm  
LED35/Q-HO  
9,7w/ 944lm

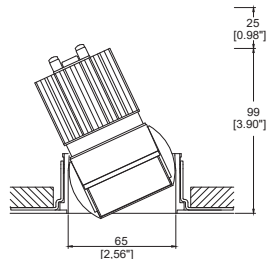
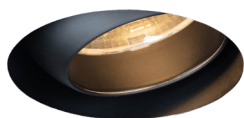
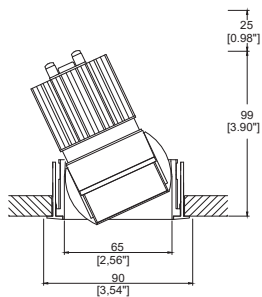


# Oculus



**Oculus Trim**  
OC010-TRI  
**Oculus Trimless**  
OC010-TLI

LED51/Q-HE  
8.0w/ 1053lm  
LED51/Q-HO  
14.0w/ 1809lm



# Introducing our new Mix Range:

Available in two sizes: Mix60 and Mix85

The Mix Range is a versatile solution available in two models: **Mix60 and Mix85**.

Designed to meet the highest standards of performance and adaptability, the Mix85 luminaire comes in four trim styles to fit any design: **Pinhole, Edge, Flare, and Duo** while Mix60 comes in three trim styles: **Edge, Flare, and Duo**.

Both models are available with trim and trimless installation kits, ideal for various ceiling conditions including existing ceilings, new partial skims, as well as wood and stone surfaces. **1884lm delivered** using the new Quantum HO module.\*

The Mix Range is built specifically to work with our new LED50 ONE and LED35 modules, which offer quick and easy screw-in installation.

Rated IP54 as standard and optionally IP65, the Mix Range is fire rated ready with 1 hour fire rating available.

Designed and produced in the UK.

\*This percentage reflects the highest efficiency measured for this particular fixture



**The Londoner Hotel.**

Lighting Design: Inverse Lighting Design

Interior Design: Yabu Pushelberg

Architect: Woods Bagot

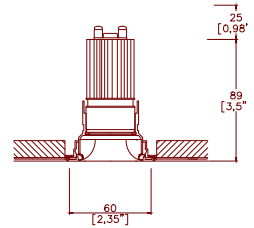
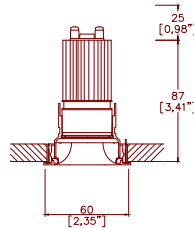
Client: The Edwardian Group

Photography: Andrew Beasley

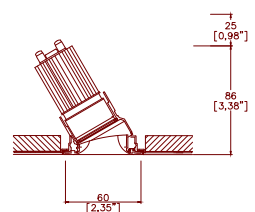
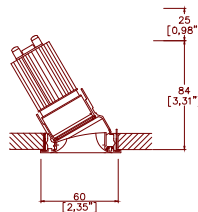
# Mix60 Flare



Also available in new finishes



**Mix60 Flare Fixed Trim**  
MX60000-FL-TR1  
**Mix60 Flare Fixed Trimless**  
MX60000-FL-TL1



**Mix60 Flare Accent Trim**  
MX60010-FL-TR1  
**Mix60 Flare Accent Trimless**  
MX60010-FL-TL1

LED35/Q-HE  
8W / 529lm  
LED35/Q-HO  
9.7W / 700lm

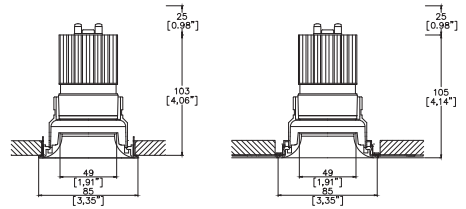


# Mix85 Flare

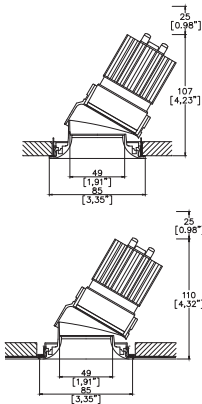


**Mix85 Flare Trim**  
 MX85000-FL-TR1  
**Mix85 Flare Trimless**  
 MX85000-FL-TL1

LED51/Q-HE  
 8.0w/ 1004lm  
 LED51/Q-HO  
 14.0w/ 1613lm



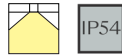
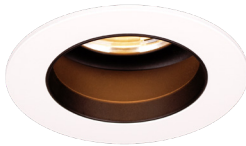
**Mix85 Flare Accent Trim**  
 MX85010-FL-TR1  
**Mix85 Flare Accent Trimless**  
 MX85010-FL-TL1



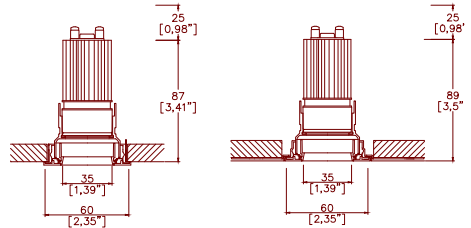
# Mix60 Duo



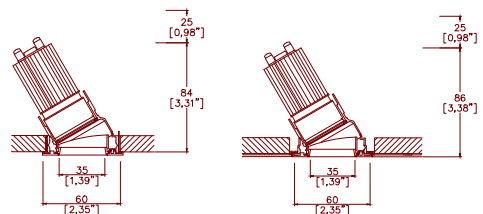
Also available in new finishes



**Mix60 Duo Fixed Trim**  
MX60000-DU-TR1  
**Mix60 Duo Fixed Trimless**  
MX60000-DU-TL1



**Mix60 Duo Accent Trim**  
MX60010-DU-TR1  
**Mix60 Duo Accent Trimless**  
MX60010-DU-TL1



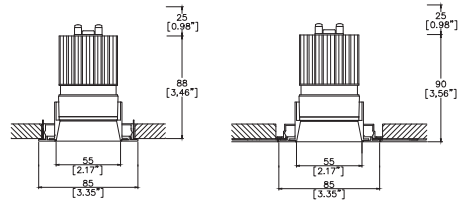
LED35/Q-HE  
8W / 734lm  
LED35/Q-HO  
9.7W / 936lm

# Mix85 Duo

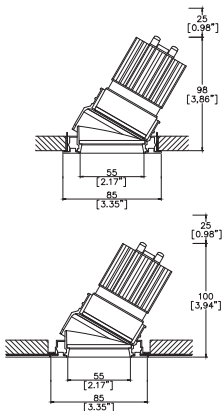


**Mix85 Duo Trim**  
MX85000-DU-TR  
**Mix85 Duo Trimless**  
MX85000-DU-TL

LED51/Q-HE  
8.0w/ 1094lm  
LED51/Q-HO  
14.0w/ 1747lm



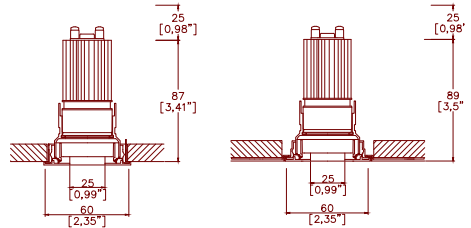
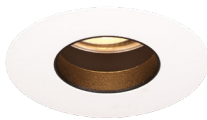
**Mix85 Duo Accent Trim**  
MX85010-DU-TR  
**Mix85 Duo Accent Trimless**  
MX85010-DU-TL



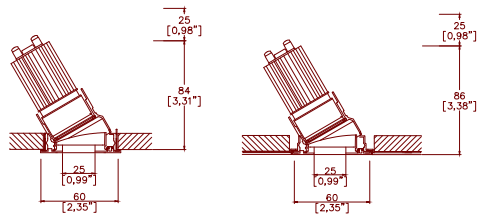
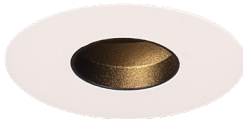
# Mix60 Edge



Also available in new finishes



**Mix60 Edge Fixed Trim**  
 MX60000-ED-TR1  
 Mix60 Edge Fixed Trimless  
 MX60000-ED-TL1



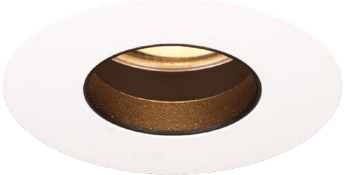
**Mix60 Edge Accent Trim**  
 MX60010-ED-TR1  
 Mix60 Edge Accent Trimless  
 MX60010-ED-TL1

LED35/Q-HE  
 8W / 570lm  
 LED35/Q-HO  
 9.7W / 734lm

# Mix85 Edge

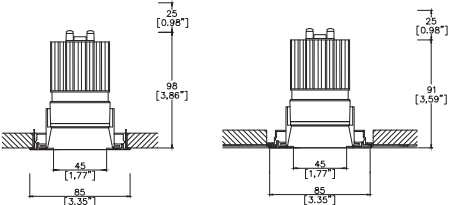


Also available in new finishes

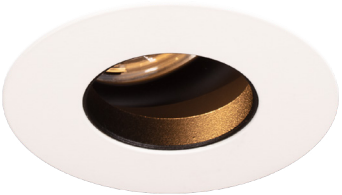
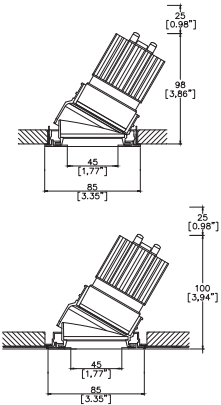


**Mix85 Edge Trim**  
 MX85000-ED-TR1  
**Mix85 Edge Trimless**  
 MX85000-ED-TL1

LED51/Q-HE  
 8.0w/ 923lm  
 LED51/Q-HO  
 14.0w/ 1272lm



**Mix85 Edge Accent Trim**  
 MX85010-ED-TR1  
**Mix85 Edge Accent Trimless**  
 MX85010-ED-TL1





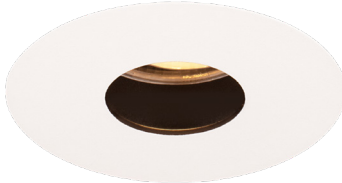
**Private Farmhouse Residence, Oxfordshire**  
Lighting Design: dpa lighting consultants  
Photography: Matt Livey



# Mix85 Pinhole

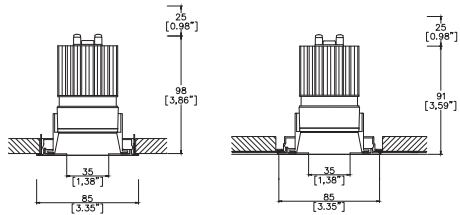


Also available in new finishes

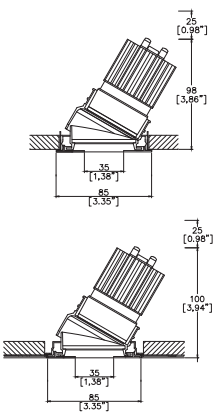


**Mix85 Pinhole**  
MX85000-PH-TR1  
**Mix85 Pinhole Trimless**  
MX85000-PH-TL1

LED51/Q-HE  
8.0w/ 785lm  
LED51/Q-HO  
14.0w/ 1603lm



**Mix85 Pinhole Accent Trim**  
MX85010-PH-TR1  
**Mix85 Pinhole Accent Trimless**  
MX85010-PH-TL1





Lucent Lighting Ltd  
Unit 7-8 Great Cambridge  
Industrial Estate Lincoln Rd  
Enfield Middlesex EN1 1SH

Tel: +44 (0)20 8442 0880

[www.lucent-lighting.com](http://www.lucent-lighting.com)  
[www.lucent-lighting.com/na](http://www.lucent-lighting.com/na)  
[info@lucent-lighting.com](mailto:info@lucent-lighting.com)