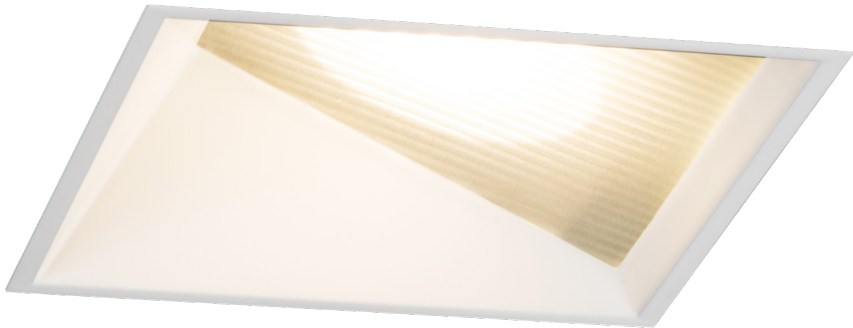
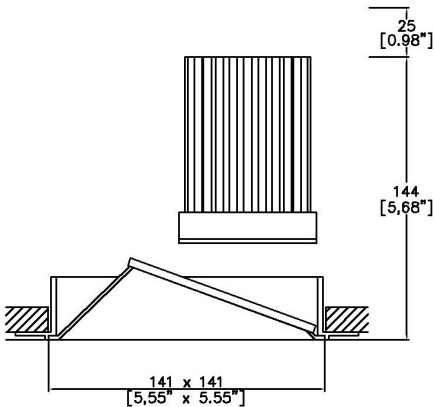


ProSpex Plus XL Square Wallwash Trimless



141 x 141mm (5.55" x 5.55") overall trim dimension.
Available with standard trim kit or plaster-in kit for flush appearance. Family of matching products also available. Required depth height + 25mm^



090+XL-LED-TL-SQ-WW
Cut-out 142 x 142mm

LED Source	LED7ITW	LED7IWD
CCT range 5000K-2000K	@ 3000K	@ 3000K
Drive Current	1000mA	1000mA
Power inc Driver	27.5W	27.5W
Beam Angle	42°	442°
Angled at	0°	20°
Delivered Lumens	834	882
Delivered Intensisty cd	857	868
Efficacy lm/w	30	32
Forward Volt	23.4V	23.4V
CRI	≥95 CRI	≥95 CRI

Project Ref: _____ Location Ref: _____

Fixture Order Code: 090+XL-LED-TL-SQ-WW - - -

Fixture

090+XL-LED-TL-SQ-WW Plus XL Square Wallwash Trimless with LED71

Finish

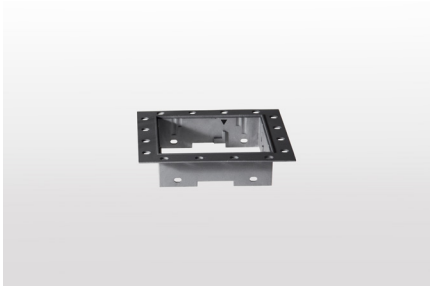
WH White
BK Black
RAL Custom RAL Colour*

IP Rating

44 IP44

Emergency

E Maintained 3hr Emergency
ED Maintained 3hr DALI Self Test
ES Maintained 3hr Self Test



LED Order Code: LED71TW - 5020 - -

LED

LED71TW LED70 ONE Tuneable White

CCT

5020 5000K - 2000K

Beam

42 42°

Protocol

D6 DALI Type 6**
D8 DALI Type 8**
B Bluetooth***



Honeycomb Louvre



Warm Tone

Accessories Order Code:

- Louvre/Lens
- MD45 Honeycomb Louvre
 - MDCC Warm Tone Lens
 - MDUV UV Lens

Technical Details

*Custom RAL code must be specified. Custom RAL colours can increase prices and lead times

Dimming. Whilst Lucent can offer the majority of its luminaires with various dimming options, it remains the responsibility of the specifier/installer to check and ensure compatibility of any control equipment used. Additional cabling may be required depending on the dimming protocol specified.

**Bluetooth (wireless) is the communication method. The exact dimming protocol must be confirmed to allow the selection of suitable drivers or bluetooth devices.

^ Depth indicated is the minimum recess depth for the luminaire with a remote mounted LED driver. Installing a driver through either the luminaire cut-out or installation kit may require additional recess depth, please refer to the relevant luminaire installation instructions for further details.Data correct at time of publishing

First Fix Requirement. Luminaire comprised of fixture body with ceiling trim and installation kit, which is to be fitted into the ceiling once finished. Ensure correct alignment of the installation kit before final assembly (see luminaire instllation instructions for details)

IP Rating. Tested from underside of the ceiling

It is the policy of Lucent Lighting to continually review and improve its products and therefore reserve the right to change any details of product or withdraw specifications without prior notice.

Luminaires designed to comply with EN60598 and all other standards.

This specification sheet superseded all previous versions.

All intellectual property rights pertaining to the product described above and to this document are owned by or licensed to Lucent Lighting Ltd.

We reserve the right to take whatever action is necessary to protect those intellectual property rights.

Please notify Lucent Lighting Ltd of any inaccuracies immediately. E&OE

Light efficiency:

30 Lumen/Watt

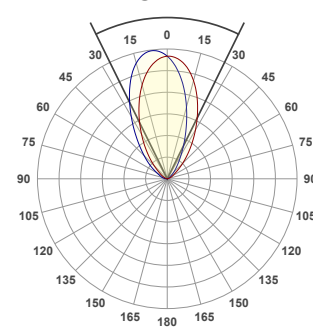
Light quality:

CRI: 91.1

Color temperature:

3000 K

52.4°



Product name:

090+XL-LED-SQ-WW - LED71TW-5020-44 - 3000K

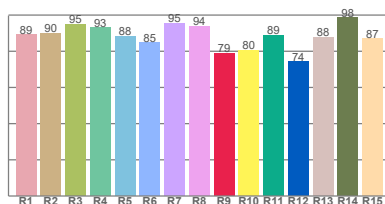
Item number:

Plus XL Square Wallwash - LED71TW-5020-44 - 3000K

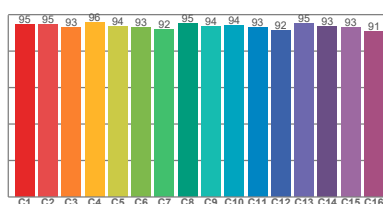
Delivered information for above fixture and LED combination.

Output: 834 Lumen Peak intensity: 857 cd Power consumption: 27.5

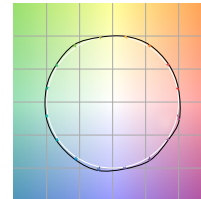
CRI R values



TM30 C Values

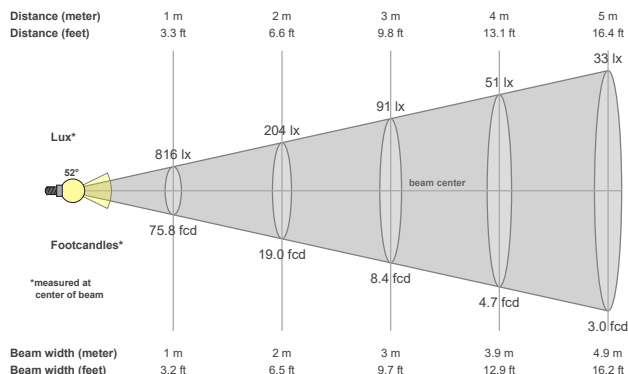


Color vector graphics



Color temperature	Color rendering Index	Red component	Color fidelity	Color gamut	Color quality scale	Color coordinate cie 1931	Color coordinate cie 1931	Color coordinate	Color coordinate	Color deviation from black body
CCT	CRI	CRI R9	TM30 Rf	TM30 Rg	CQS	x	y	u	v	Δuv
3000 K	91.1	78.8	93.6	106.0	94.0	0.437	0.404	0.253	0.333	-0.0142

Beam details



Beam angles

Beam angle 50%	Field angle 10%	Cutoff angle 2,5%
52.4°	101.9°	138°

Beam intensities

Peak intensity	Int. ratio in 120° cone	Int. ratio in 90° cone
857 cd	94.0%	81.4%

Beam intensities from 1-20m

1m	2m	3m	4m	5m	6m	7m	8m	9m	10m	11m	12m	13m	14m	15m	16m	17m	18m	19m	20m
3.3ft	6.6ft	9.8ft	13.1ft	16.4ft	19.7ft	23ft	26.2ft	29.5ft	32.8ft	36.1ft	39.4ft	42.7ft	45.9ft	49.2ft	52.5ft	55.8ft	59.1ft	62.3ft	65.6ft
816lx	204lx	91lx	51lx	33lx	23lx	17lx	13lx	10lx	8lx	7lx	6lx	5lx	4lx	4lx	3lx	3lx	3lx	2lx	2lx
75.8fcd	19fcd	8.4fcd	4.7fcd	3fcd	2.1fcd	1.5fcd	1.2fcd	0.9fcd	0.8fcd	0.6fcd	0.5fcd	0.4fcd	0.4fcd	0.3fcd	0.3fcd	0.3fcd	0.2fcd	0.2fcd	0.2fcd

The above information is for 3000K colour temperature, for specific module information please see LED spec located on our website

For information regarding other colour temperatures please use the following factors for lumen output and candelas:

2700K =

4000K =

Light efficiency:

32 Lumen/Watt

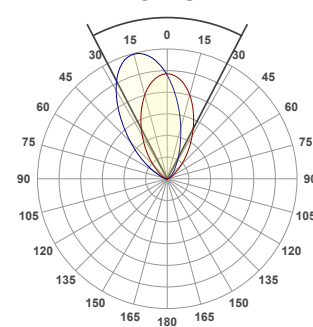
Light quality:

CRI: 90.9

Color temperature:

3000 K

54.8°



Product name:

**090+XL-LED-SQ-WW-P20 -
LED71TW-5020-44 - 3000K**

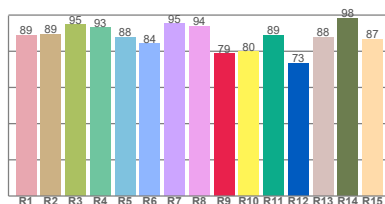
Item number:

**Plus XL Square Wallwash set at
P20 - LED71TW-5020-44 - 3000K**

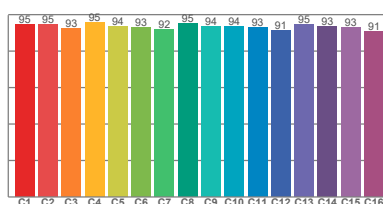
**Delivered information for above
fixture and LED combination.**

Output: 882 Lumen Peak intensity: 868 cd Power consumption: 27.6

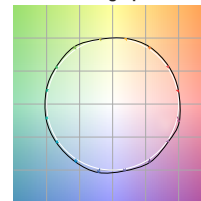
CRI R values



TM30 C Values

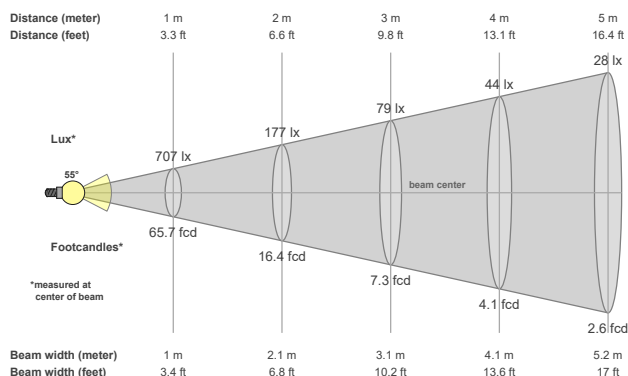


Color vector graphics



Color temperature	Color rendering Index	Red component	Color fidelity	Color gamut	Color quality scale	Color coordinate cie 1931	Color coordinate cie 1931	Color coordinate	Color coordinate	Color deviation from black body
CCT	CRI	CRI R9	TM30 Rf	TM30 Rg	CQS	x	y	u	v	Δuv
3000 K	90.9	78.6	93.6	106.0	93.9	0.437	0.404	0.253	0.333	-0.0145

Beam details



Beam angles

Beam angle 50%	Field angle 10%	Cutoff angle 2,5%
54.8°	104.2°	138.7°

Beam intensities

Peak intensity	Int. ratio in 120° cone	Int. ratio in 90° cone
868 cd	93.9%	78.7%

Beam intensities from 1-20m

1m	2m	3m	4m	5m	6m	7m	8m	9m	10m	11m	12m	13m	14m	15m	16m	17m	18m	19m	20m
3.3ft	6.6ft	9.8ft	13.1ft	16.4ft	19.7ft	23ft	26.2ft	29.5ft	32.8ft	36.1ft	39.4ft	42.7ft	45.9ft	49.2ft	52.5ft	55.8ft	59.1ft	62.3ft	65.6ft
707lx	177lx	79lx	44lx	28lx	20lx	14lx	11lx	9lx	7lx	6lx	5lx	4lx	4lx	3lx	3lx	2lx	2lx	2lx	2lx
65.7fcd	16.4fcd	7.3fcd	4.1fcd	2.6fcd	1.8fcd	1.3fcd	1fcd	0.8fcd	0.7fcd	0.5fcd	0.5fcd	0.4fcd	0.3fcd	0.3fcd	0.3fcd	0.2fcd	0.2fcd	0.2fcd	0.2fcd

The above information is for 3000K colour temperature, for specific module information please see LED spec located on our website

For information regarding other colour temperatures please use the following factors for lumen output and candelas:

2700K =

4000K =